



ONE

— INTEGRATED —
SOLUTION

for Control & Automation

- Motion Control
- Full range of PLCs
- Powerful Software
- Cloud Solution

Motion Catalog

Servo Products Only

Coordinated Motion
Gearing
Camming

Now Available With
EtherCAT



Servo Drives & Motors

Servo Made Simple: we do the work for you

- Ready Made Motion Code
- Embedded Diagnostic Tools
- Safe Values Recommendation
- Automatic Communication Setup
- Tuning Using One Parameter

Everything you need for your Servo Solution:

Hardware

- Drives: single and three-phase, robotic cables available
- Wide servo power range – 50W to 5,000W (0.06-6.7 HP)
- Motors: to suit any machine size; robust, built-in high-resolution serial encoders
- (absolute: 23-bit , incremental: 20-bit), IP65
- Built-in communications: EtherCAT¹ or CANopen

Software

- Servo drives and Motors: simple setup
- Ready-made code: implement Motion in 2 clicks
- Motion Control programming: drag & drop function blocks
- Control up to 8 Axes
- One-parameter tuning
- Built-in Diagnostic tools



¹ USC (UniStream PLC) only, via EtherCAT COM module UAC-01EC2

Product Offering



Servo drive	Voltage	Power (kW / HP)	Motor	Frame Size (MM)	Rated current (A)	Rated torque (NM / lb-in)	Peak current (A)	Peak torque (NM / lb-in)	Rated speed (RPM)	Max speed (RPM)	Encoder type (Incremental \ Absolute)
UMD-0000B-■3	1-Phase 220V	0.05 / 0.06	UMM-0000BA■-B4	40	0.9	0.159 / 1.4	3.3	0.557 / 4.92	3000	6000	Abs 23bit
UMD-0001B-■3		0.1 / 0.13	UMM-0001BA■-B4		3.3	0.318 / 2.81	4	1.11 / 9.82			
UMD-0002B-■3		0.2 / 0.26	UMM-0002BA■-B4	60	1.5	0.637 / 5.63	4.7	1.91 / 16.9			
			UMM-0002BN■-B4								
UMD-0004B-■3	0.4 / 0.53	UMM-0004BA■-B4	60	2.9	1.27 / 11.23	9.2	3.82 / 33.8				
		UMM-0004BN■-B4									
UMD-0007C-■3	1-Phase 220V and 3-Phase 220V	0.75 / 1	UMM-0007CA■-B4	80	5.1	2.39 / 21.15	16.1	7.16 / 63.36	2000	3000	Abs 23bit
UMD-0010C-■3			UMM-0007CN■-B4								
UMD-0010C-■3	1 / 1.34	UMM-0010CA■-B4	80	6.9	3.18 / 28.14	19.5	8.8 / 77.88				
		UMM-0010CN■-B4									
UMD-0015C-■3	1.5 / 2.01	UMM-0015CA■-B2	130	8.2	7.16 / 63.36	24.6	21.5 / 190.27				
		UMM-0015CN■-B2									
UMD-0020C-■3	2 / 2.68	UMM-0020CA■-B2	130	11.3	9.55 / 84.51	33.9	28.7 / 253.99				
		UMM-0020CN■-B2									
UMD-0030C-■3	3 / 4.02	UMM-0030CA■-B3	180	18	14.3 / 126.55	54	36.5 / 323.02				
		UMM-0030CN■-B3									
UMD-0050C-■3	5 / 6.7	UMM-0050CA■-B3	180	28	23.9 / 211.51	84	54.3 / 480.55				
		UMM-0050CN■-B2									
UMD-0010E-■3	1 / 1.34	UMM-0010EA■-B2	130	3	4.78 / 42.3	9	14.3 / 126.55				
		UMM-0010EN■-B2									
UMD-0015E-■3	1.5 / 2.01	UMM-0015EA■-B2	130	4.3	7.16 / 63.36	12.9	21.5 / 190.27				
		UMM-0015EN■-B2									
UMD-0020E-■3	2 / 2.68	UMM-0020EA■-B2	130	5.7	9.55 / 84.51	17.1	28.7 / 253.99				
		UMM-0020EN■-B2									
UMD-0030E-■3	3 / 4.02	UMM-0030EA■-B3	180	8.8	14.3 / 126.55	26.4	36.5 / 323.02				
		UMM-0030EN■-B3									
UMD-0050E-■3	5 / 6.7	UMM-0050EA■-B3	180	15	23.9 / 211.51	45	71.6 / 633.66				
		UMM-0050EN■-B3									

* All motors are offered with oil seal as standard

■ Add the letter B in the square in order to include holding brake eg. UMM-0004BA■-B4 -> UMM-0004BAB-B4

■ For CANopen add B. For EtherCAT add E. UMD-0000B-■3 -> UMD-0000B-B3/UMD-0000B-E3

Product Designation Key

Drive

UMD - 0004	B	-	B3
①	②	③	④

No.	Key	Description
①	Product Line	Unitronics Servo Drive
②	Rated Power	0001: 100W 0010: 1KW
③	Input Voltage	B: 1PH 200V-230V C: 3PH 200V-230V E: 3PH 380V-440V
④	Product Series	B3- CANopen E3- EtherCAT

Cables

UMC	B4	FN	R	05
①	②	③	④	⑤

UMC	B4	PB	05
①	②	③	⑤

No.	Key	Description
①	Product line	Unitronics Servo Cable
②	Motor series	B2\B3\B4
③	Cable functionality	PN- Power cable without brake PB-Power cable with brake FA-Feedback cable absolute encoder FN-Feedback cable incremental encoder
④	Cable type	None: Standard cable R-Robotic cable
⑤	Cable length	03/05/10 Meters

Motor

UMM - 0004	B	N	B	-	B4
①	②	③	④	⑤	⑥

No.	Key	Description
①	Product Line	Unitronics Servo Motor
②	Rated Power	0001: 100W 0010: 1KW
③	Input Voltage	B: 1PH 200V-230V C: 3PH 200V-230V E: 3PH 380V-440V
④	Encoder	A: Absolute N: Incremental
⑤	Brake	None: No Brake B: With Brake
⑥	Product Series	B2/B3/B4

** UL certification is valid for all 220V products

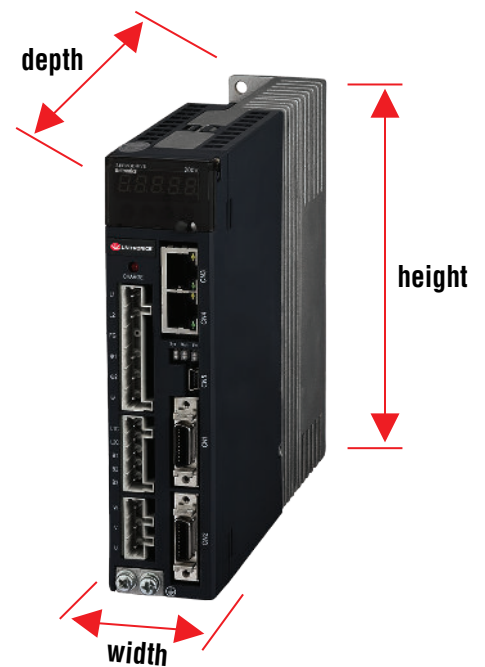
Drive Specification



Input Power Supply	Main Circuit	200V	Single-Phase 200~230VAC (50W~1kW / 0.06 - 1.34HP) Three-phase 200~230VAC (750W~5.0kW / 1.01 - 6.7HP)
		400V	Three-phase 380~440VAC (1~5.0kW / 1.34 - 6.7HP)
	Control Circuit	200V	Single-Phase 200~230VAC (50W~5.0kW / 0.06 - 6.7HP)
		400V	24VDC (1~5.0kW / 1.34 - 6.7HP)
Control Method			SVPWM Control
Feedback			20bit incremental encoder: 1048576 PRR 23bit Absolute encoder: 8388608 PRR
Operating Conditions	Ambient Temperature		0~+55°C / 32~131°F
	Storage Temperature		-25~+85°C / -13~185°F
	Ambient/Storage Humidity		5%~95% RH (no condensation)
	Elevation		Up to 1000m/3280ft
	Vibration Resistance		4.9m/s ² / 0.5g
	Impact Resistance		19.6m/s ² / 2g
Configuration			Wall mounted
I/O Signals	8 Digital Inputs		
	4 Digital Outputs		
Other	Built-in regenerative resistor		750W~5.0kW / 1.01 - 6.7HP
	Protection Functions		Overcurrent, overvoltage, low voltage, overload, regeneration error, overspeed
	Display		CHARGE (Red), POWER (Green), 7-segment LEDs × 5 (Built-in digital panel operator)
	Communication		EtherCAT/CANopen

Servo Drive Dimensions

Power	200V	400V
(kW)	W×H×D(mm)	W×H×D(mm)
0.05	40X160X180	—
0.1	40X160X180	—
0.2	40X160X180	—
0.4	40X160X180	—
0.75	84X186X180	—
1.0	84X186X180	100X186X180
1.5	100X186X180	100X186X180
2.0	100X186X180	100X186X180
3.0	125X271X205	125X271X205
5.0	125X271X205	125X271X205



** UL certification is valid for all 220V products

Servo Motor Specification

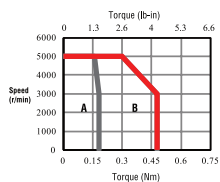


		200 VAC		200 VAC				200 VAC				400 VAC					
				B4				B2		B3		B2		B3			
Rated Output Power	Kw / HP	0.05 / 0.06	0.1 / 0.13	0.2 / 0.26	0.4 / 0.53	0.75 / 1	1 / 1.34	1.5 / 2.01	2 / 2.68	3 / 4.02	5 / 6.7	1 / 1.34	1.5 / 2.01	2 / 2.68	3 / 4.02	5 / 6.7	
Rated Torque	NM / lb-in	0.16 / 1.41	0.32 / 2.83	0.637 / 5.63	1.27 / 11.23	2.39 / 21.15	3.18 / 28.14	7.16 / 63.36	9.55 / 84.51	14.3 / 126.55	23.9 / 211.51	4.78 / 42.3	7.16 / 63.36	9.55 / 84.51	14.3 / 126.55	23.9 / 211.51	
Peak Torque	NM / lb-in	0.48 / 4.24	0.96 / 8.49	1.91 / 16.9	3.82 / 33.8	7.16 / 63.36	8.8 / 77.88	21.5 / 190.27	28.7 / 253.99	36.5 / 323.02	54.3 / 480.55	14.3 / 126.55	21.5 / 190.27	28.7 / 253.99	36.5 / 323.02	71.6 / 633.66	
Rated Current	A	0.6	1.1	1.5	2.9	5.1	6.8	8.2	11.3	18.0	28.0	3.0	4.3	5.7	8.8	15.0	
Max Current	A	1.7	3.0	4.7	9.2	15.3	21.0	24.6	33.9	54.0	84.0	9.0	12.9	17.1	26.4	45.0	
Rated Speed	RPM	3000								2000							
Max. Speed	RPM	6000								3000							
Rotor Moment of Inertia (with brake)	kg*cm ²	0.019 (0.05)	0.035 (0.052)	0.1469 (0.1794)	0.2435 (0.2759)	0.9094 (1.0655)	1.144 (1.3)	18.4 (19.5)	23.5 (24.6)	41.3 (44.5)	65.7 (68.9)	13.2 (14.3)	18.4 (19.5)	23.5 (24.6)	41.3 (44.5)	65.7 (68.9)	
	lb-in ²	0.0065 (0.017)	0.012 (0.0177)	0.0501 (0.0613)	0.0832 (0.0942)	0.3107 (0.3640)	0.3909 (0.4442)	6.2875 (6.6634)	8.0303 (8.40621)	14.1128 (15.2063)	22.3824 (23.5442)	4.5106 (4.8865)	6.2875 (6.6634)	8.0303 (8.40621)	14.1128 (15.2063)	22.3824 (23.5442)	
weight (with brake)	kg	0.374 (0.566)	0.508 (0.7)	0.9 (1.3)	1.3 (1.7)	2.6 (3.2)	3.1 (3.8)	8.9 (10.4)	10.8 (12.3)	16.63 (20.23)	24.3 (27.9)	7 (8.5)	8.9 (10.4)	10.8 (12.3)	16.63 (20.23)	24.3 (27.9)	
	lb	0.82 (1.24)	1.12 (1.543)	1.984 (2.866)	2.866 (3.747)	5.732 (7.054)	6.834 (8.377)	19.621 (22.928)	23.81 (27.116)	36.662 (44.6)	53.572 (61.509)	15.432 (18.74)	19.621 (22.928)	23.81 (27.116)	36.662 (44.6)	53.572 (61.509)	
Brake Rated Voltage		DC24V±10%															
Brake Rated Power	W	4.0		7.4		9.6		19.5		35.0		19.5		35.0			
Brake Holding Torque	NM / lb-in	0.318 / 2.814		1.5 / 13.276		3.2 / 28.322		12 / 106.209		40 / 354.03		12 / 106.209		40 / 354.03			
Incremental Encoder	PPR	-		20 bit (1,048,576)				20 bit (1,048,576)									
Absolute Encoder	PPR	23bit (8,388,609)				23 bit (8,388,608)											
Insulation class		F															
Ambient Temperature	°C / °F	0~+40°C / 32~+104°F (No freezing)															
Ambient Humidity	RH	20% to 80% non-condensing															
Enclosure		IP65 / NEMA4X															

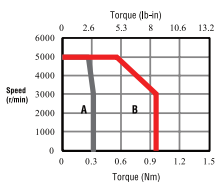
* The values in parentheses are for servo motors with holding brakes

UMM-B4

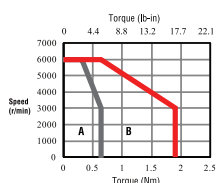
UMM-0000BA□-B4



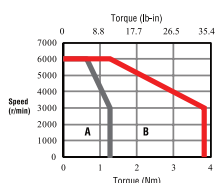
UMM-0001BA□-B4



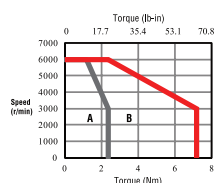
UMM-0002B□□-B4



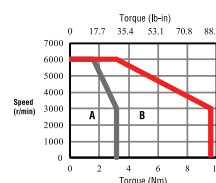
UMM-0004B□□-B4



UMM-0007C□□-B4

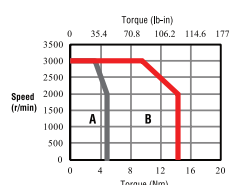


UMM-0010C□□-B4

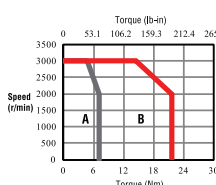


UMM-B2

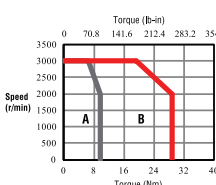
UMM-0010□□□-B2



UMM-0015□□□-B2

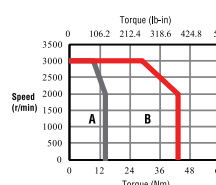


UMM-0020□□□-B2

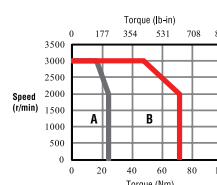


BMM-B3

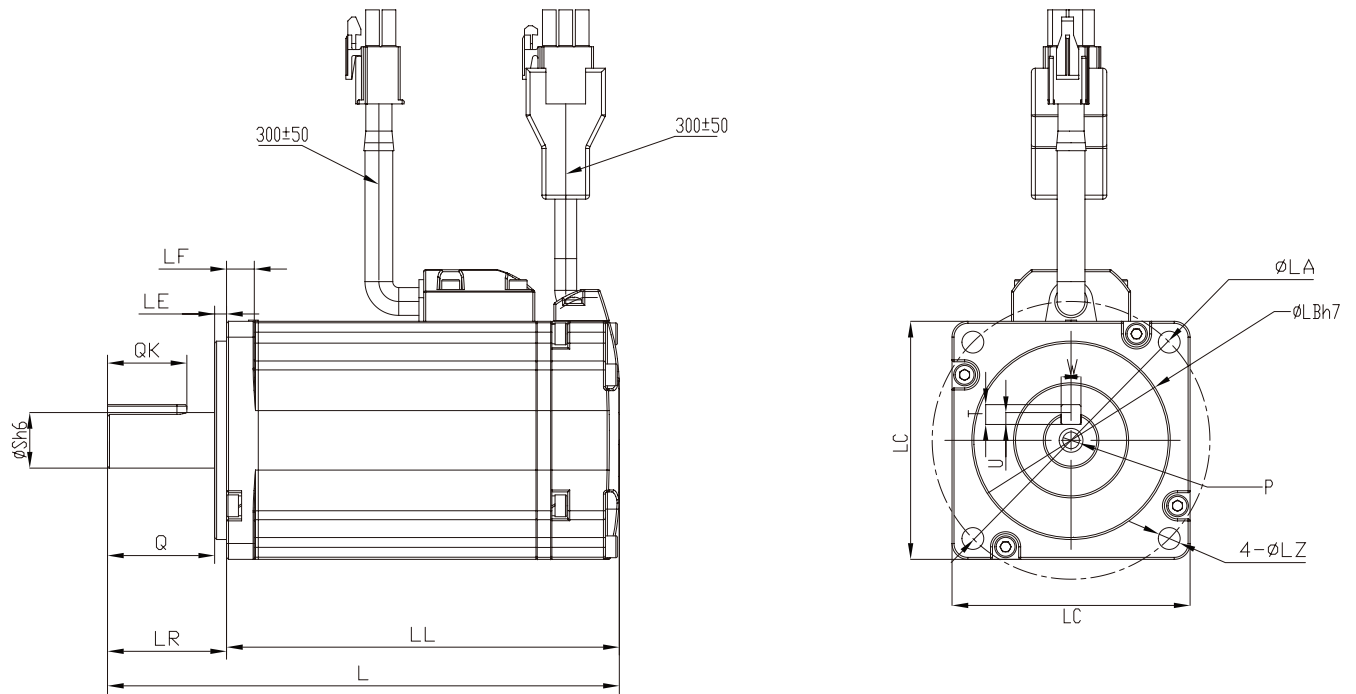
UMM-0030□□□-B3



UMM-0050□□□-B3



UMM-B4: Motor Dimensions



unit: mm

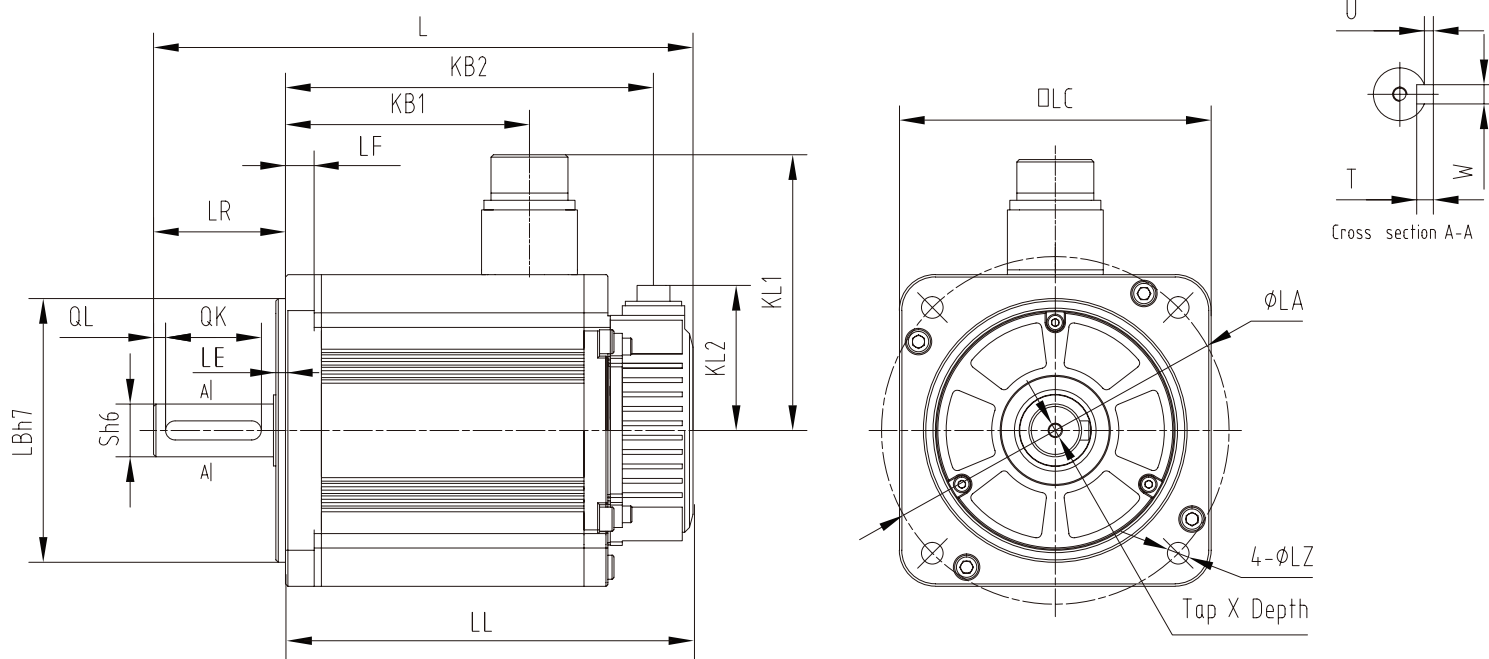
Part Number	L*	LL*	Flange Side							S	Tap × Depth	Key				
			LR	LE	LF	LC	LA	LB	LZ			QK	W	T	U	Q
UMM-0000BA☒-B4	92.5 (126)	62.5 (96)	25	2.5	5	40	46	30	4.3	8	M3X6	14	3	3	1.8	22.5
UMM-0001BA☒-B4	108.5 (142)	78.5 (112)														
UMM-0002BA☒-B4	108 (137)	78 (107)	30	3	7	60	70	50	6	14	M5×12	20	5	5	3	27
UMM-0004BA☒-B4	129 (158)	99 (128)														
UMM-0007CA☒-B4	141 (184)	111 (144)	40	3	8	80	90	70	7	19	M6×12	25	6	6	3.5	37
UMM-0010CA☒-B4	155 (198)	125 (158)														
UMM-0002BN☒-B4	126.5 (155.5)	96.5 (125.5)	30	3	7	60	70	50	5.5	14	M5×12	20	5	5	3	27
UMM-0004BN☒-B4	147.5 (176.5)	117.5 (146.5)														
UMM-0007CN☒-B4	159.5 (202.5)	129.5 (162.5)	40	3	8	80	90	70	7	19	M6×12	25	6	6	3.5	37
UMM-0010CN☒-B4	173.5 (216.5)	143.5 (176.5)														

*The values in parentheses are for servo motors with holding brakes

☒- Add the letter B in the square in order to include holding brake eg. UMM-0004BA☒-B4 -> UMM-0004BAB-B4

** UL certification is valid for all 220V products

UMM-B2 & UMM-B3: Motor Dimensions



unit: mm

Part Number	L*	*LL	Flange Side						S	Tap × Depth	Key					KB1*	KB2*	KL1	KL2	
			LR	LE	LF	LC	LA	LB			LZ	QK	QL	W	T					U
UMM-0010EA-B2	203 (245.5)	148 (190.5)	55	4	12	130	145	110	9	22	M6×20	40	5	8	7	3	80 (103.2)	131.5 (174)	117	60.5
UMM-0015CA-B2	225 (267.5)	170 (212.5)															102 (125.2)	153.5 (196)		
UMM-0015EA-B2																				
UMM-0020CA-B2	247 (289.5)	192 (234.5)															124 (147.2)	175.5 (218)		
UMM-0020EA-B2																				
UMM-0030CA-B3	307 (378)	228 (299)	79	3.2	18	180	200	114.3	13.5	35	M8×16	55	6	10	8	4.5	143	203 (274)	140	79
UMM-0030EA-B3																				
UMM-0050CA-B3	357 (428)	278 (349)															183	253 (324)		
UMM-0050EA-B3																				

* The values in parentheses are for servo motors with holding brakes

☒- Add the letter B in the square in order to include holding brake eg. UMM-0010EA☒-B2 -> UMM-0010EAB-B2

** UL certification is valid for all 220V products



To Find Your Local Distributor, Visit Our Website:
UnitronicsPLC.com → Where To Buy



The information in this document reflects products at the date of printing. Unitronics reserves the right, subject to all applicable laws, at any time, at its sole discretion, and without notice, to discontinue or change the features, designs, materials and other specifications of its products, and to either permanently or temporarily withdraw any of the foregoing from the market. All information in this document is provided „as is“ without warranty of any kind, either expressed or implied, including but not limited to any implied warranties of merchantability, fitness for a particular purpose, or non-infringement. Unitronics assumes no responsibility for errors or omissions in the information presented in this document. In no event shall Unitronics be liable for any special, incidental, indirect or consequential damages of any kind, or any damages what so ever arising out of or in connection with the use or performance of this information. The trade names, trademarks, logos and service marks presented in this document, including their design, are the property of Unitronics (1989) (R“G) Ltd. or other third parties and you are not permitted to use them without the prior written consent of Unitronics or such third party as may own them

MR-CAT-EU1-S2

Toll free: 866-666-6033

Unitronics, Inc.

1 Batterymarch Park, Quincy, MA 02169

Tel : 617 - 657 - 6596, Fax : 617 - 657 - 6598
usa.sales@unitronics.com, global.sales@unitronics.com



Local Reps & Distributors

