



ONE

— INTEGRATED —
SOLUTION

for Control & Automation

- Motion Control
- Full range of PLCs
- Powerful Software
- Cloud Solution

Motion Catalog

VFD Products



Variable Frequency Drives

High performance, cost-effective VFDs, ideal for both machines & process control

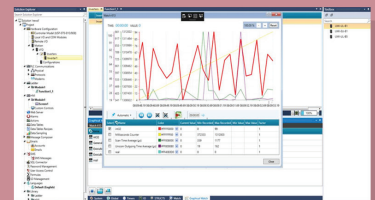
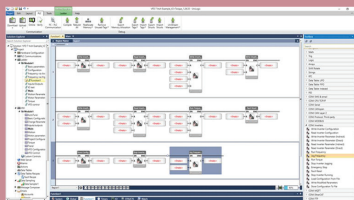
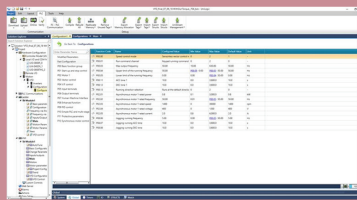
- Simple to use • Robust • Broad power & voltage range •

Features

- Options for both VFDs from 0.4 kW and up to 110 kW
- EMI Filters, Built-In
- Voltage Range: 220V - 480V
- Braking units - Built-in
- Heavy-Duty overload capacity, up to 200%
- Wide horsepower range: 0.5hp-150hp
- Coated PCBs: minimize dust penetration damage
- RS485: Modbus RTU Fieldbus
- Built-in Sensorless Control: Vector, Torque, Volts per Hz
- Safe Torque Off (STO)
- Mounting options: Wall, Flange, Rail
- Optional communication and I/O extension
- UL approved, TÜV-SÜD Safety and CE Certified



Use as a stand-alone product, or as part of a complete All-in-One package with our controllers



Product Specifications

		UMI-B1 EU	UMI-B5 UL	
Power	Input Voltage	200-240VAC, Single Phase 380-440VAC, Three Phase	200-240VAC, Three Phase 380-480VAC, Three Phase	
	Input Frequency	50/60Hz		
	Supported Motors	Asynchronous Induction Motors, Three Phase Input	Asynchronous Induction Motors, Three Phase Input Permanent Magnet Synchronous Motors, Three Phase Input	
	Output Frequency	0-400Hz		
	Overload Capacity		150%, 60 seconds	
			180%, 10 seconds	
		200%, 1 second		
Control	Control Method	SVPWM (Space Vector PWM) SVC (Sensorless Vector Control)		
	Control Setting	MODBUS, Analog, Digital, PID, Pulse		
	Communication	MODBUS RTU RS-485		
	Keypad	Film Keypad: <4kW (5HP) Removable: ≥4kW (5HP)	Removable: All power range	
Input	Analog Inputs	Total 2: 1 input 0-10V, 0-20mA 1 input 0-10V	Total 3: 2 inputs 0-10V, 0-20mA 1 input 0-10V	
	Digital Inputs	Total 5: 4 inputs 1kHz 1 input 50kHz	Total 9: 8 inputs 1kHz 1 input 50kHz	
Output	Analog Outputs	Up to 2: 1 output 0-10V, 0-20mA ≤2.2kW/3HP, (2nd output available from >2.2kW/3HP)	2 outputs 0-10V, 0-20mA	
	Digital Outputs	1 output sink/source	Total 2: 1 output sink/source, 1 output 50kHz	
Features	Dynamic Braking Unit	Built-in (≤37kW/50HP)		
		Optional (>37kW/50HP)		
	EMC	Built-in C3 (≥4kW/5HP), Comply with IEC/EN 61800-3		
		Optional C3 (<4kW/5HP), Comply with IEC/EN 61800-3		
		Optional C2, Comply with IEC/EN 61800-3		
General	Operating Temperature	(-10)°C/14°F – 50°C/122°F (de-rated by 1% for every 1°C/2°F above 40°C/104°F)		
	Altitude	2000m/6600 ft (de-rated by 1% for every additional 100m/330ft above 1000m/3300ft)		
	Enclosure Rating	IP20		
	Mounting Options	Wall and Rail (≤2.2kW/3HP)	Wall, Flange	
		Wall and Flange (>2.2kW/3HP)		
	Cooling	Air-cooling		
	Safe Torque Off	√	×	
	Compliance	CE, TÜV-SUD Safety Mark, UL and cUL*	CE, UL and cUL	

* 0.4-11kw Drives are UL and cUL certified and support 480Vac



VFD Models

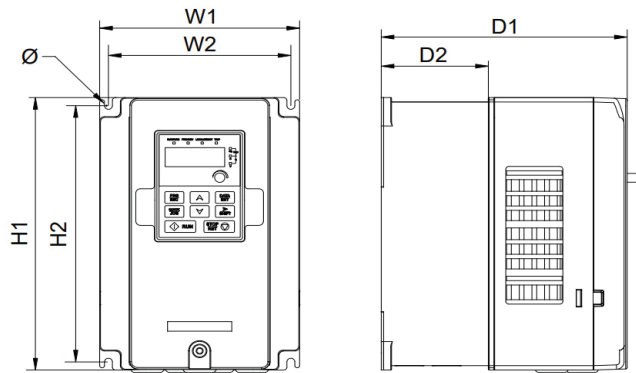


POWER (KW\HP)	Voltage	Part number	Rated Output current (A)	UL & cUL	Safety (TUV SUD)	Permanent Magnet Control	Extended I/Os
0.4\0.5	1Ph 200-240V	UMI-0004BE-B1	2.5	√	STO	-	-
0.75\1	1Ph 200-240V	UMI-0007BE-B1	4.2	√	STO	-	-
	3Ph 200-240V	UMI-0007CU-B5	4.5	√	-	√	√
	3Ph 380-480V	UMI-0007EE-B1	2.5	√	STO	-	-
1.5\2	1Ph 200-240V	UMI-0015BE-B1	7.5	√	STO	-	-
	3Ph 200-240V	UMI-0015CU-B5	7	√	-	√	√
	3Ph 380-480V	UMI-0015EE-B1	4.2	√	STO	-	-
		UMI-0015EU-B5	3.7	√	-	√	√
2.2\3	1Ph 200-240V	UMI-0022BE-B1	10	√	STO	-	-
	3Ph 200-240V	UMI-0022CU-B5	10	√	-	√	√
	3Ph 380-480V	UMI-0022EE-B1	5.5	√	STO	-	-
		UMI-0022EU-B5	5	√	-	√	√
4\5	3Ph 200-240V	UMI-0040CU-B5	16	√	-	√	√
	3Ph 380-480V	UMI-0040EE-B1	9.5	√	STO	-	-
		UMI-0040EU-B5	9.5	√	-	√	√
5.5\7.5	3Ph 200-240V	UMI-0055CU-B5	21	√	-	√	√
	3Ph 380-480V	UMI-0055EE-B1	14	√	STO	-	-
		UMI-0055EU-B5	14	√	-	√	√
7.5\10	3Ph 200-240V	UMI-0075CU-B5	30	√	-	√	√
	3Ph 380-480V	UMI-0075EE-B1	18.5	√	STO	-	-
		UMI-0075EU-B5	18.5	-	-	√	√

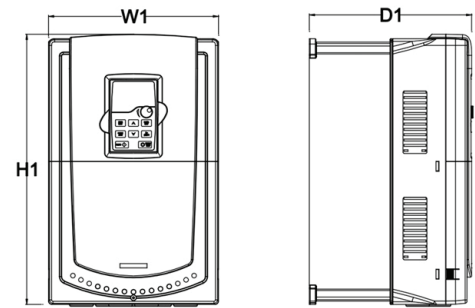


POWER (KW\HP)	Voltage	Part number	Rated Output current (A)	UL & cUL	Safety (TUV SUD)	Permanent Magnet Control	Extended I/Os
11\15	3Ph 200-240V	UMI-0110CU-B5	42	√	-	√	√
	3Ph 380-480V	UMI-0110EE-B1	25	√	STO	-	-
		UMI-0110EU-B5	25	√	-	-	-
15\20	3Ph 200-240V	UMI-0150CU-B5	55	√	-	√	√
	3Ph 380-440V	UMI-0150EE-B1	32	-	STO	-	-
	3Ph 380-480V	UMI-0150EU-B5	32	√	-	√	√
18.5\25	3Ph 200-240V	UMI-0185CU-B5	70	√	-	√	√
	3Ph 380-440V	UMI-0185EE-B1	38	-	STO	-	-
	3Ph 380-480V	UMI-0185EU-B5	38	√	-	√	√
22\30	3Ph 200-240V	UMI-0220CU-B5	80	√	-	√	√
	3Ph 380-440V	UMI-0220EE-B1	45	-	STO	-	-
	3Ph 380-480V	UMI-0220EU-B5	45	√	-	√	√
30\40	3Ph 200-240V	UMI-0300CU-B5	110	√	-	√	√
	3Ph 380-440V	UMI-0300EE-B1	60	-	STO	-	-
	3Ph 380-480V	UMI-0300EU-B5	60	√	-	√	√
37\50	3Ph 200-240V	UMI-0370CU-B5	130	√	-	√	√
	3Ph 380-440V	UMI-0370EE-B1	75	-	STO	-	-
	3Ph 380-480V	UMI-0370EU-B5	75	√	-	√	√
45\60	3Ph 200-240V	UMI-0450CU-B5	160	√	-	√	√
	3Ph 380-440V	UMI-0450EE-B1	92	-	STO	-	-
	3Ph 380-480V	UMI-0450EU-B5	92	√	-	√	√
55\75	3Ph 200-240V	UMI-0550CU-B5	200	√	-	√	√
	3Ph 380-440V	UMI-0550EE-B1	115	-	STO	-	-
	3Ph 380-480V	UMI-0550EU-B5	115	√	-	√	√
75\100	3Ph 380-440V	UMI-0750EE-B1	150	-	STO	-	-
	3Ph 380-480V	UMI-0750EU-B5	150	√	-	√	√
90\120	3Ph 380-440V	UMI-0900EE-B1	180	-	STO	-	-
	3Ph 380-480V	UMI-0900EU-B5	180	√	-	√	√
110\150	3Ph 380-440V	UMI-1100EE-B1	215	-	STO	-	-
	3Ph 380-480V	UMI-1100EU-B5	215	√	-	√	√

UMI- B1: Drive Dimensions



UMI- B5: Drive Dimensions



Model	W1	H1	D1	D2	Weight (kg)	
UMI-0004BE-B1	80	160	123.5	120.3	0.9	
UMI-0007BE-B1						
UMI-0004BU-B1						
UMI-0007BU-B1						
UMI-0015BE-B1		185	140.5	137.3	1.2	
UMI-0022BE-B1						
UMI-0015BU-B1						
UMI-0004CU-B1						
UMI-0007CU-B1						
UMI-0022BU-B1						
UMI-0007EE-B1						1
UMI-0015EE-B1						
UMI-0022EE-B1						
UMI-0007EU-B1						
UMI-0015EU-B1						
UMI-0022EU-B1						
UMI-0040EE-B1	146	256	167	84.5	3.1	
UMI-0055EE-B1	170	320	196.3	113	5.6	
UMI-0075EE-B1						
UMI-0110EE-B1					5.9	
UMI-0150EE-B1						
UMI-0185EE-B1	200	340.6	184.3	104.5	9	
UMI-0220EE-B1	250	400	202	123.5	15.5	
UMI-0300EE-B1						
UMI-0370EE-B1						
UMI-0450EE-B1	282	560	238	138	25	
UMI-0550EE-B1						
UMI-0750EE-B1						
UMI-0900EE-B1						
UMI-1100EE-B1	338	554	329	-	45	

Model	W1	H1	D1	Weight (kg)
UMI-0007CU-B5	126	196	175	1.2
UMI-0015EU-B5				2.5
UMI-0022EU-B5				2.5
UMI-0015CU-B5	146	263	181	4
UMI-0022CU-B5				
UMI-0040EU-B5				
UMI-0055EU-B5				
UMI-0040CU-B5	170	332	216	7
UMI-0055CU-B5				
UMI-0750EU-B5				
UMI-0110EU-B5				
UMI-0075CU-B5	230	342	216	8
UMI-0150EU-B5				
UMI-0185EU-B5				
UMI-0110CU-B5	255	407	245	10
UMI-0150CU-B5				
UMI-0220EU-B5				
UMI-0300EU-B5				
UMI-0185CU-B5	270	555	325	30
UMI-0220CU-B5				
UMI-0300CU-B5				
UMI-0370EU-B5				
UMI-0450EU-B5				
UMI-0550EU-B5	325	680	365	47
UMI-0370CU-B5				
UMI-0450CU-B5				
UMI-0550CU-B5				
UMI-0750EU-B5				
UMI-0900EU-B5				
UMI-1100EU-B5				

Optional Parts



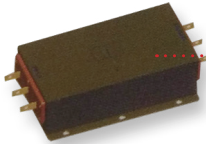
External Keypads



Flange Mounting Plates



Braking Resistors



C3 Input Filters
C2 Filters

Product Designation Key

UMI - 0022	E	U	- B1
①	②	③	④ ⑤

No.	Key	Description
①	Product Line	Unitronics Motion Inverters
②	Power Range	0004:400W/0.5HP 0022:2.2kW/3HP
③	Power Rating	B: 1PH 200V-240V C: 3PH 200V-240V E: 3PH 380V-440V/480V
④	Certification	*U – UL Certified E – TÜV-SÜD Certified ,UL*
⑤	Product series	B1 / B5



To Find Your Local Distributor, Visit Our Website:
UnitronicsPLC.com → Where To Buy



The information in this document reflects products at the date of printing. Unitronics reserves the right, subject to all applicable laws, at any time, at its sole discretion, and without notice, to discontinue or change the features, designs, materials and other specifications of its products, and to either permanently or temporarily withdraw any of the foregoing from the market. All information in this document is provided „as is“ without warranty of any kind, either expressed or implied, including but not limited to any implied warranties of merchantability, fitness for a particular purpose, or non-infringement. Unitronics assumes no responsibility for errors or omissions in the information presented in this document. In no event shall Unitronics be liable for any special, incidental, indirect or consequential damages of any kind, or any damages what so ever arising out of or in connection with the use or performance of this information. The trade names, trademarks, logos and service marks presented in this document, including their design, are the property of Unitronics (1989) (R“G) Ltd. or other third parties and you are not permitted to use them without the prior written consent of Unitronics or such third party as may own them

MR-CAT-EU1-S2

Toll free: 866-666-6033

Unitronics, Inc.

1 Batterymarch Park, Quincy, MA 02169

Tel : 617 - 657 - 6596, Fax : 617 - 657 - 6598
usa.sales@unitronics.com, global.sales@unitronics.com



Local Reps & Distributors

